

Refractory



Shown in Polished Bronze

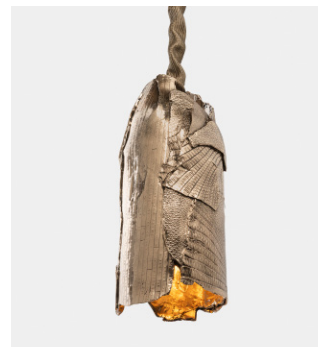
Cypher Hanging Light

The Cypher series is a shroud of nature's codes. The patterns born from millions of years of DNA coding, celebrated by both the outside and the rarely seen inside of the armadillos armor, are wrapped together with human language and literature.

Each work is piece-unique. The artist hand assembles each pendant from panels of torn wax. Textural composition, diameter, and height will slightly vary from one to another.

The concept invites commissions involving multiple castings and configurations.

The cord cover is woven from volcanic basalt fiber, drop lengths may be specified.



& CYP.HL.01

Specifications

Dimensions	in	cm
Height Range	14-19	35-48
Diameter Range	6-8	15-20

Weight 45-65 lbs

Materials	Finishes
Cast Bronze	Cinder
	Leather
	Natural
	Otter
	Polished
	Silver Dollar

Lamping

E26 Socket, (1) 100 W Equiv Bulbs
2700 K
Dimmable
UL Listed